

PORT OF  TALLINN
The Port of Good News

Port of Tallinn –
**Estonia's Biggest
Maritime Gateway**



PORT OF TALLINN

Port of Tallinn aims to become *the most innovative port on the shores of the Baltic Sea* by offering its customers the best environment and development opportunities



Passengers

10.6 M
passengers
a year



Cargo

20.6 M
tons a year



Shipping

5 ferries:
2 MM passengers &
1 MM vehicles a year;
Ice-breaker Botnica



Real Estate

Old City Harbour
Development 16 ha
Muuga Industrial Park 76 ha
Paldiski Industrial Park 34 ha

Organization

Listed on Nasdaq Tallinn SE since 13.06.2018

- ✓ 67% Republic of Estonia
- ✓ 33% Investment funds, pension funds, private investors
- Port of Tallinn is a **landlord port**
- **We provide infrastructure** – land, quays and sea approaches
- **Private operators provide superstructure:** handling equipment and warehousing
- Ca **500 employees** in Port of Tallinn group

PORT OF  TALLINN
The Port of Good News



PORT OF
TALLINN 

Results in 2018

of The Port of Tallinn

- 20.6 million tons of **cargo**
- 222,654 TEU **containers**
- 10.6 million **passengers**

- 1754 **cargo ship** calls
- 5550 **passenger ship** calls
- 348 **cruise ship** calls



Revenue Structure & Main Customers

(2018)

Passenger harbours

Regular lines



Cruise



Other

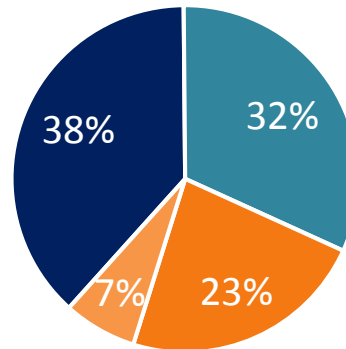
Botnica



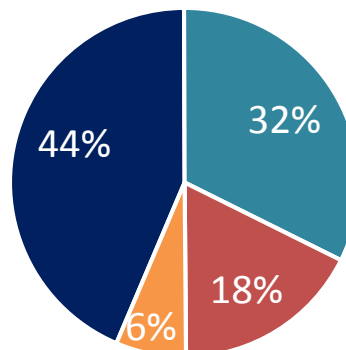
Republic of Estonia



Revenue



Adjusted EBITDA



Cargo harbours

Terminal operators



Shipping lines



Ferries

Clients



Republic of Estonia



PORT OF  TALLINN

HARBOURS

FROM CARGO TO CRUISE




Saaremaa
Harbour


Paldiski South Harbour


Old City Harbour
 Old City Marina


Muuga Harbour

Tallinn

OLD CITY HARBOUR

Estonia's Biggest Tourism Gateway

TERRITORY	55.3 ha
AQUATORY	94 ha
TOTAL LENGTH OF BERTHS	5 km
NUMBER OF BERTHS	24
MAX. DEPTH	10.7 m
MAX. LENGTH OF A VESSEL	340+ m

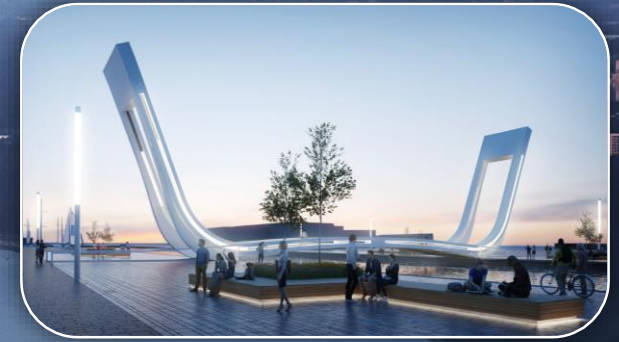
Passengers (ferries, cruises, yachts), Ro-Ro

Cruises

CALLS PER YEAR (2018) - 348
PASSENGERS PER YEAR (2018) - 638 000



Future *Vision* of the Old City Harbour



- The Old City Harbour area should be **open and attractive for the citizens and visitors**
- The Old City Harbour and surrounding areas are to be viewed as one – a multiple function real estate development process „**playing arena**”
- The attractive area adds volume to the **passenger traffic** and vice versa



Facts & figures

- Development volume:
 - over 200 000 m² gross area
 - + development on the reclaimed area
- Up to 7 floors, 24 m height
- Development in stages
- Mixed-use development
 - residential
 - commercial/office
 - cultural, social use
 - promenade
 - city square





SMART PORT *Application*

- A **traffic management solution** organizing pre check-in, check-in and line management **for ports** with multiple **ferry operators** by providing holistic and easy to understand service for **passengers** with vehicles.
- Improving passenger **experience** and reducing **environmental impact**.
- Developed in cooperation with:  **NORTAL**  **Hansab**
if works
- **Tight cooperation with ferry operators** – Tallink, Viking Line, Eckerö Line, Moby SPL and with **ports** of Kristiansand, Helsinki, Stockholm and other neighbouring ports.
- Fully operational since **2018 in Old City Harbour**
- By the end 2019 in **Muuga harbour**



SAAREMAA HARBOUR

Deepwater Harbour on Estonia' Biggest Island

TERRITORY	20 ha
AQUATORY	41 ha
TOTAL LENGTH OF BERTHS	445 m
NUMBER OF BERTHS	3 + ujuvkai
MAX. DEPTH	10 m
MAX. LENGTH OF A VESSEL	200 m

Passengers (yachts & cruises), cargo


PORT OF
TALLINN



PALDISKI *SOUTH HARBOUR*

Port of Tallinn's Second Biggest Cargo Harbour

*Ro-Ro, general cargo,
solid bulk, liquid bulk*



TERRITORY	119 ha
AQUATORY	147 ha
TOTAL LENGTH OF BERTHS	1,85 km
NUMBER OF BERTHS	10
MAX. DEPTH	14,5 m
MAX. LENGTH OF A VESSEL	230 m

PALDISKI SOUTH HARBOUR

Development areas



INDUSTRIAL PARK AREA
11 ha

INDUSTRIAL PARK
AREA
23 ha

MUUGA HARBOUR

Estonia's Biggest Cargo Harbour

TERRITORY	567 ha
AQUATORY	682 ha
TOTAL LENGTH OF BERTHS	6,4 km
NUMBER OF BERTHS	29
MAX. DEPTH	18 m
MAX. LENGTH OF A VESSEL	300+ m

Containers, liquid bulk, solid bulk, general cargo, Ro-Ro

PORT OF
TALLINN



DEVELOPMENT PLANS

TOTAL NEW QUAYLINE 1653 m
TOTAL NEW TERRITORY 64 ha

64 ha

27 ha

PORT OF
TALLINN



MUUGA INDUSTRIAL PARK

EASTERN PART PLOTS

INDUSTRIAL PARK AREA

76 ha

PORT OF
TALLINN





INDUSTRIAL PARKS

Advantages

- Good location, immediate closeness of the harbour
- Good access to berths and terminal
- **Swift movement** of cargo between industrial park and terminals
- Substantial **cost effect** by limiting customs procedures and avoiding customs securities
- **Synergy** between different add value centers located in the harbor area
- Unlimited time of **storage**
- **Long-term** land contracts, **reliable partner** – state enterprise Port of Tallinn
- Location within the **free zone**

RAIL BALTIC

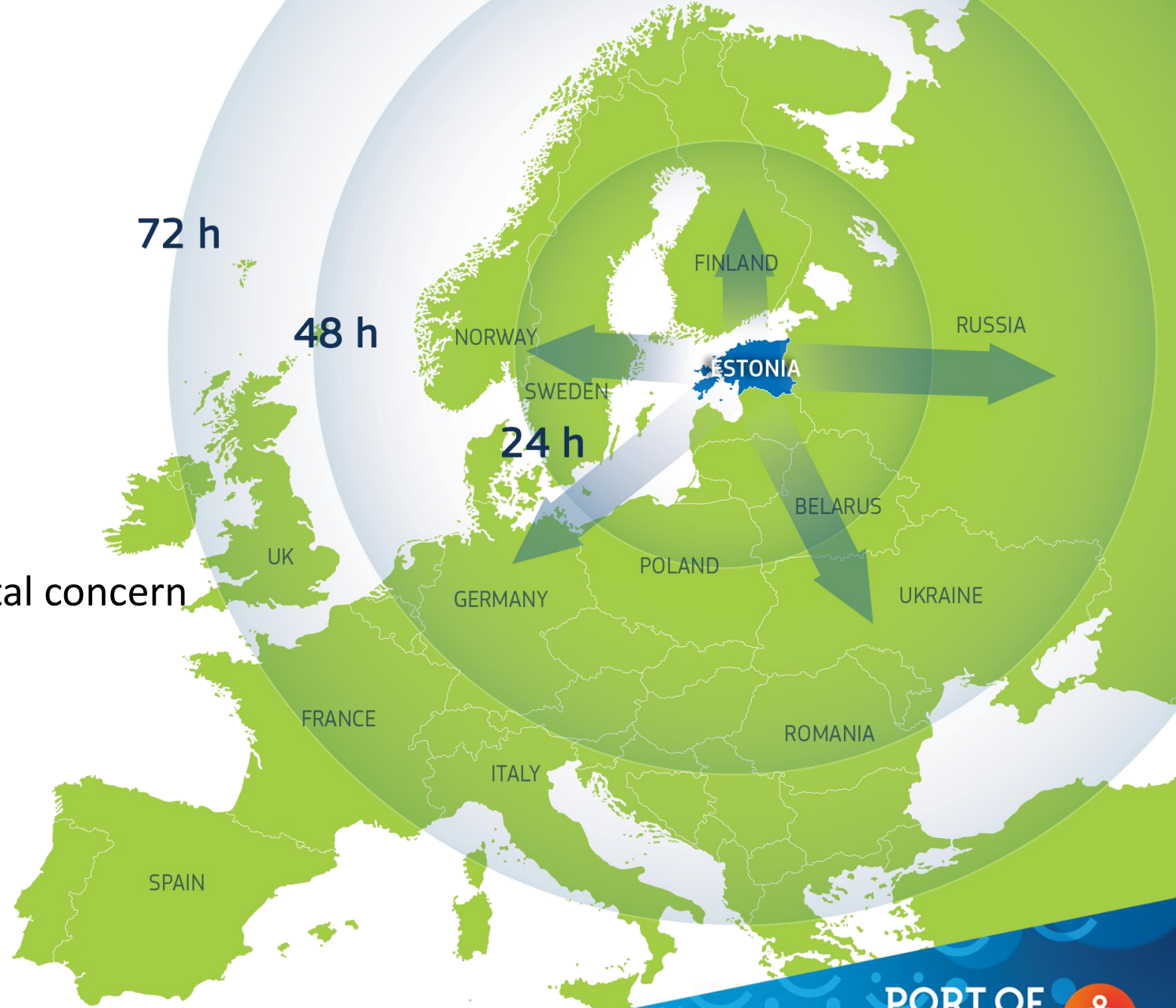
Cargo Terminal



Location

Well Positioned as a Gateway

- **Unique** geographical position
- Ideal **natural** conditions
- Well-developed **infrastructure**
- **Highest quality** and environmental concern
- European service **standard**,
focus on **safety**
- Free zone
- **Land availability**



Contact



Mr. Margus Sitsi

Business Manager

(General Cargo and Dry Bulk, Ro-Ro, Containers)

+372 508 6160

m.sitsi@ts.ee



PORT OF  TALLINN

The Port of Good News

Thank You!

www.portoftallinn.com



ISO 9001
ISO 14001
BUREAU VERITAS
Certification

