



European Union
European Regional
Development Fund

Baltic Loop

**Improved transport for passenger
and goods**

Kick-off meeting Tallinn, 24th September 2019



Ahmed Alaeddine
Region Örebro County, Sweden



The goal

1. Overcome transport bottlenecks
2. Improve traffic flows
3. Reduce emission

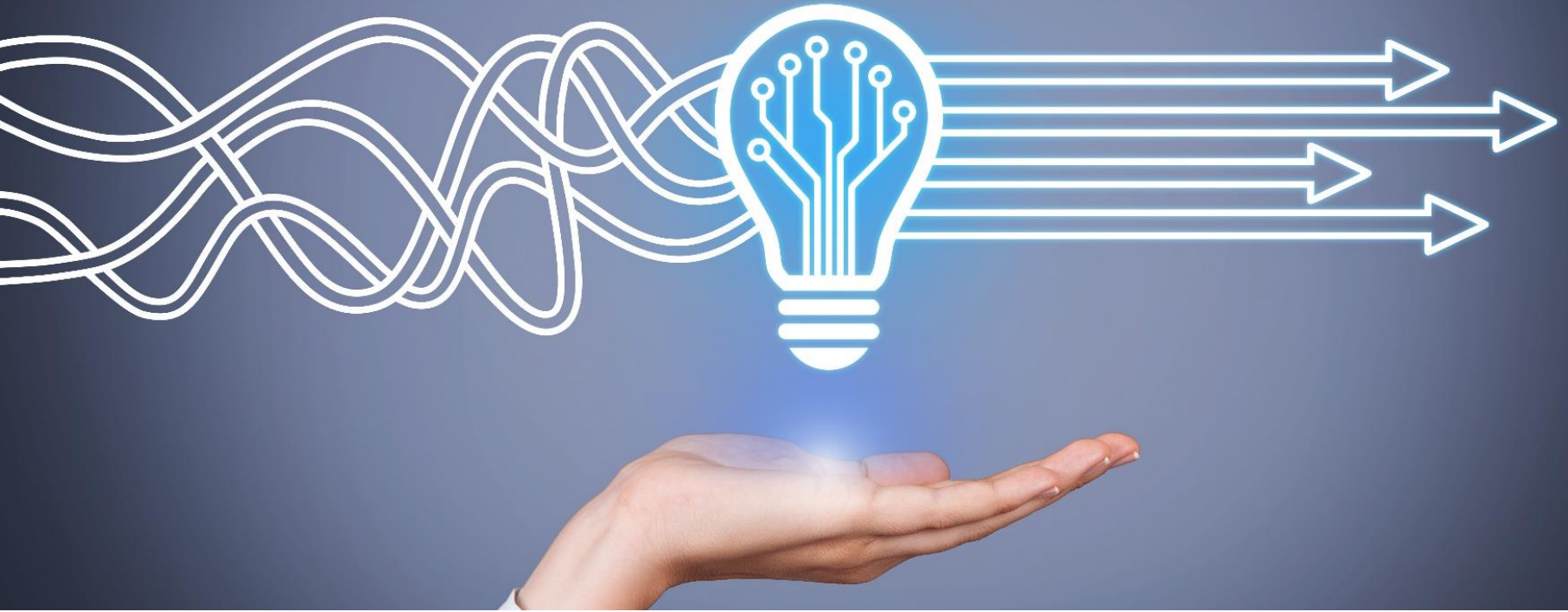


Main result

1. Shortened transportation
2. Shortened travel time
3. Decreased emission in these corridors



Non-technical solutions



Outputs

- 1. Reduce travel times**
- 2. Improve accessibility to corridors to the main corridor from hinterland areas**

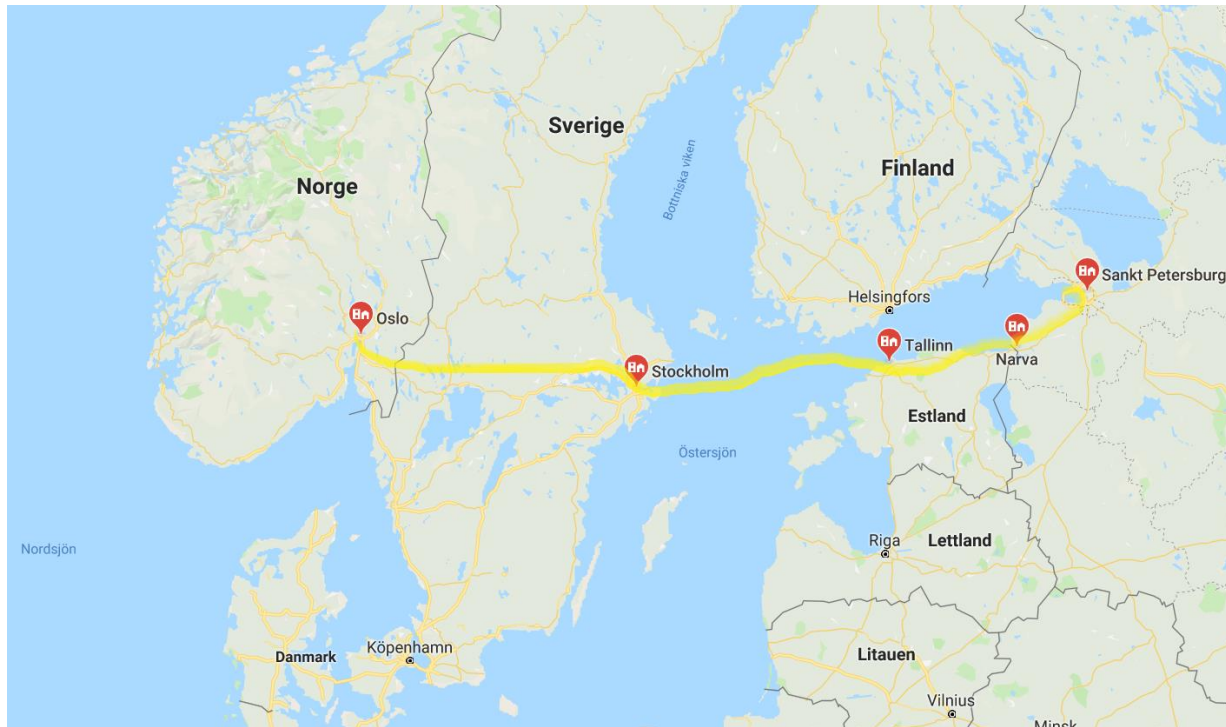


Examples

Examples of what is non-technical solutions:

- Organizational optimization
- Schedule optimization
- Drivers ability to drive economical
- Regulations hindrance
- Administrativ hindrance
- Economical hindrance

What Harju County will investigate





Oslo-Stockholm

- 400 km
- 3,4 million people
- 50 municipalities
- 9 employment markets
- Scandinavia's most populated regions



Railway and traveling today

- 5 hours and 20 minutes to travel by train from Oslo to Stockholm
- Three to four trips a day
- Approximately 205,000 travelers travel by train between the two capital cities each year.
- Trains have market share of 10 percent



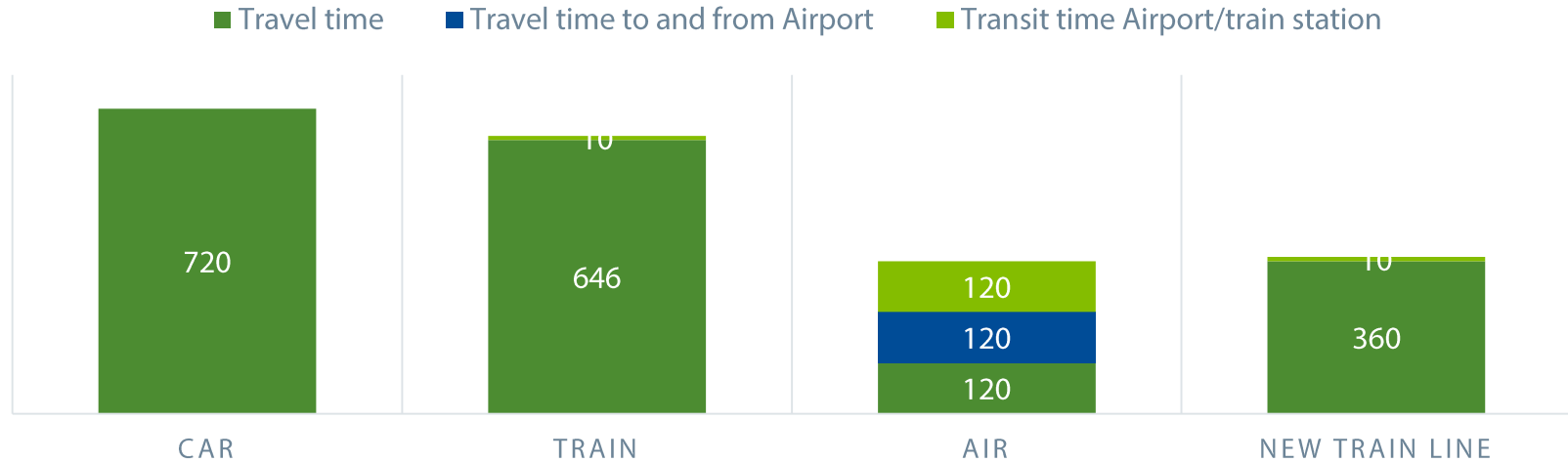
Air travel

- 20 flights a day between Oslo and Stockholm in each direction
- 1.4 million trips a year
- Three hours to travel from center to center including trips and transfer times



Time it takes for a two-way trip

TIME IT TAKES FOR A TWO WAY TRIP (MINUTES)



Reducing time

- Reducing travel time to **three hours** between Stockholm and Oslo is necessary requirement if train transportation is to become a significant competitor with air travel.
- Maximum speed of 250 km/h



Price

- Ticket price of SEK 700 (70 euro).



Improved accessibility

- Improved accessibility and availability will enable increased collaboration, innovation and growth.
- Business sector will develop and create more jobs.
- Residential construction will increase by about 10%, which would result in a net contribution of approximately 10,000 residences in Västerås, Örebro and Karlstad.



Reduced emissions

- The railway will contribute to the development of sustainable transportation system:
 - **Fewer air flights**
 - **Carbon dioxide emission will be reduced by approximately 45 000 tons per year.**
 - **Carbon dioxide emissions from cars and lorries will also be reduced.**

Action plan for Region Örebro County

1. Capacity study
2. Utility study
3. Climate study





Baltic Loop



www.balticloop.eu

Contact

Ahmed Alaeddine

Project manager

ahmed.alaeddine@regionorebro.se

+46 19-602 39 33



Region Örebro County